

News Sheet

August 2020 (no. 103A)

www.ShorehamSociety.org.uk

we possibly have... 496 members

NOT 3 BUT 4

NOW we have not three but **four** new committee members... and a Shoreham-wide survey is taking place.

Thank you to those who participated in our Virtual AGM, which went very well and all motions were passed unanimously.

Our plea for new committee members resulted in membership approval of three and we have co-opted Anne Younger as a fourth. And there are others that have showed an interest in joining the committee. All the new members come from a wide range of fields and above all are committed to ensuring that Shoreham is the best place to live and work.

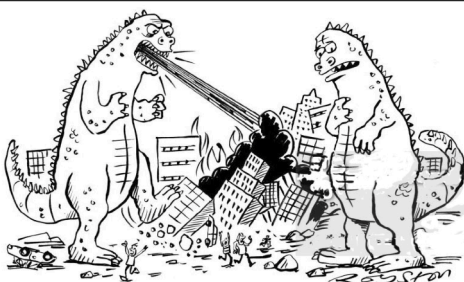
With that in mind we are conducting our first online survey to find out what the residents of Shoreham know about the Shoreham Society and how they would like to see the Society and the town progress in the future. For our members who don't use or are unable to use computers you will find the survey within this newsletter. However, if you are able to compete the survey online please use this link to take you to it:

<https://www.smartsurvey.co.uk/s/shoreham2020/>

The closing date for posted surveys is Tuesday 1st September and the online survey ends on Sunday 6th September. The survey is open to everyone so spread the word and get your friends, relations and colleagues to complete it – we really want a wide range of views to make it work.

If you are *au fait* with social media, put the link on your Facebook, Twitter, Instagram and any other media you use.

Jenny Towler, Vice-Chair



"Have you considered a career in town planning?"

Now for something a bit different...

OUR TALKS



OUR TALKS programme is an opportunity for our members to socialise, and meet up and hear something interesting (we hope!). As I write it is unlikely that we will be able to hold physical meetings for some time as the venues we normally use are still working out how they can be socially distanced.

So time for something new!

With the help of our first speaker **Tom Wright** from Friends of the Earth who will talk about "**Climate Change and campaigning** in the age of COVID-19" we are going to **Zoom and live stream his talk** on YouTube. Both Janet Pennington and Mark Perry-Nash are willing to try this as well. To participate in the question-and-answer aspect of the talks click on the Zoom link (we can have 100 people on this). But if you just want to see the talk click on the YouTube link.

Go to the **Shoreham Society webpage** to access the links. We are not charging for the talks at the moment but if you want to make an online donation via the website to cover the speaker's fees, we are not going to say no.

Depending on the success of these online talks and when we are finally able to meet up in person, we might try a 'blended' version of in person talks with a Zoom link. We are all learning new ways to communicate with each other, and some of us are more tech savvy than others. Bear with us and offer to help if you are a technical expert – especially if you are under 30!

DATES

Friday 18th September at 7.30pm

CLIMATE CHANGE and Campaigning in The Age of COVID-19

Tom Wright gives our first YouTube/ Zoom talk. He lives in Brighton where he helps run the local Friends of the Earth group. Passionate about tackling climate change, reducing plastic consumption and empowering people to make a change, he says, "I'm excited to join the Shoreham Society to talk about how we can take action together. The challenges are many – from air pollution & transport to biodiversity & planning."

Friday 16th October at 7.30pm

BRIGHT YOUNG THINGS

Mark Perry Nash returns to tell us about British High Society and the wild side of the 1920s. This year, of course, is the centenary of the Start of an Era!

Friday 20th November at 7.30pm

SUSSEX CHAIRS and the William Morris connection

Have you heard of The Sussex chair... or a Sussex chair? And what is the difference? The 'Arts & Crafts movement' but was made up of a number of different artistic societies, many of which were influenced by the internationally renowned William Morris, and what's his connection with chairs?

Dr. Janet Pennington gives you the answers tonight in this illustrated talk.

The Christmas Buffet on Friday 18th December has, for the moment, been cancelled.

Subway Update

STAFF at the station are now getting abuse from people asking to use the subway and being told they can't (without a ticket). We are probably partly responsible for this, due to the signs we put up, and we are sorry.

It's all part of the sad saga of Shoreham having a level crossing subway then losing access to it. On 30th September, Sussex Community Rail Partnership are arranging a meeting for us with Robert Walker of GTR (Southern) and Eddie Burton of Network Rail to see if the situation with subway access has changed (or, indeed, can be changed). We hope a Councillor or two will also attend, especially if we meet at The Shoreham Centre.

The Lib Dems' Nico Kearns, who was featured in *Shoreham Herald* of June 25th asking for subway access to prevent the spread of coronavirus while people were over-crowding at the gates, has had no answer from Network Rail, to date. That, I'm afraid, is par for the course with Network Rail in our experience.

MICRO SHOREHAM:

HOW SMALL IS SMALL?

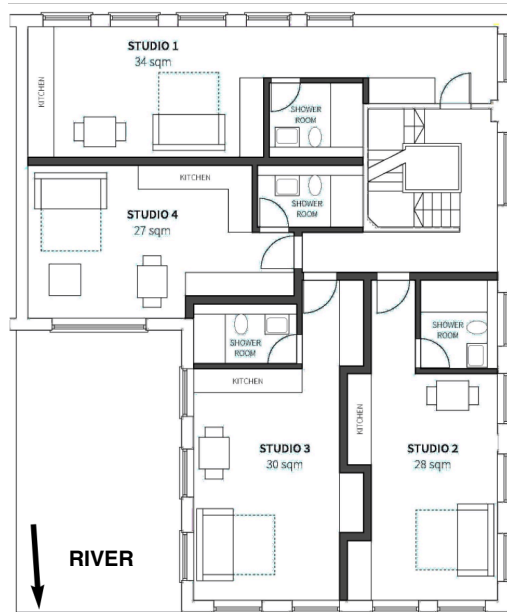
WHILST searching for something else I came across these plans for the offices above what was once Santander bank, in Shoreham High Street, which is soon to be a betting shop according the Adur District Council website (Planning: Simple Search NOTICE/0021/19).

These plans were submitted under 'permitted development' which means

that they can go through without much scrutiny – in other words, not going through the Planning Committee or really being advertised to the public. There is shortly to be a lot more of this if the Government has its way with its new planning proposals.

Now I have nothing against repurposing offices for homes, in fact I'm all for it. But my first reaction to these plans was, "This is terrible! How can we allow people to live in such small spaces? Why eight studios, not four bigger flats?"

Maybe I'm wrong and am viewing it from my privilege of a house with a garden and thankful for it in lockdown. But my first flat was a 'studio' although it was two rooms and a bathroom and I could swing a cat in it if I was into



Proposed first floor plan over what was Santander, 35-37 Shoreham High Street. The second floor is the same layout repeated.

High Street side is at top of plan

that level of cruelty. I've also had experience of some very 'iffy' bedsits. Micro homes are not a new thing. They have been trialling them in Japan (Nakagin Capsule Tower, Tokyo) and Canada (Habitat 67, Montreal) since the late 1960's and early 1970's.

The revised Parker Morris Space Standards published in 1967 recommended that for one person living in a flat should have a minimum of 32.3 square metres (less 3.2 square metres if there was a balcony access). Over the years through various planning changes, for example permitted planning for offices, have produce living space well under the 1967 recommendations.

Micro-living may suit some. It provides you with your own private space to live, cook and possibly work now. No more shared kitchen and bathrooms which some of us remember as a particular kind of hell. It is a good 'starter' space when you haven't got many belongings, but how do you cope in lockdown? Most flats now have balconies which count as outside space but is it enough? If we build more micro homes, we need more recreation space. And there we hit on a problem. You can build more homes but you can't build more space!

So my question is, how small should we go for the health of people and if we think small is beautiful how do we ensure public space is available to those who live in small spaces? (see *The Meads comments last time* – ed.)

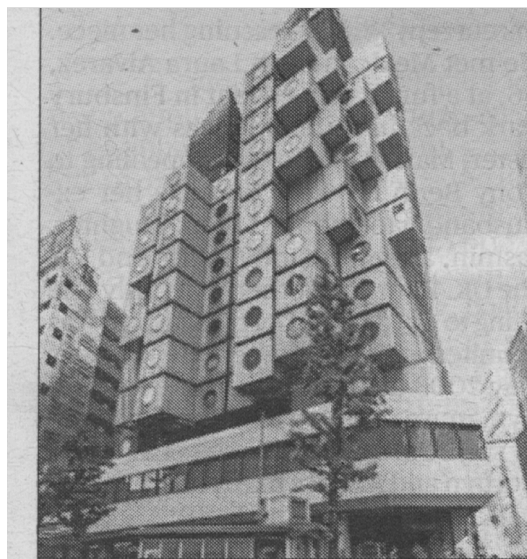
The Government White Paper – Planning for the Future – is out now and there is a link to it on the Shoreham Society website. The closing date for responses is 11.45pm on 29th October 2020. It's worth a read and only 63 pages

Letters

A SPLASH OF COLOUR

AS you'll see in Tenby (Wales), closer-to-home in Queens Place (Shoreham) and other places, a row of colourful, pastel-painted terrace houses adds much to a streetscape. So my plea is to the residents of the north side of Western Road to do likewise instead of the white, cream and yet more whites that exist at the moment. Yes it's a conservation area but a pink, pale green, a lilac or light blue would surely be a welcome contrast amongst the white-cream, next time decorating is due...? Please.

A Western Road resident



Ingenious: the Nakagin Capsule Tower in Tokyo, designed by Kisho Kurokawa

long. If the proposed plans go through, the people of Shoreham should start selecting the spaces that should not be built on to allow those living in micro-homes to escape to them.

Jenny Towler

(Ed. comments: these probably make a good 'weekend retreat' for people living in London!)

THE SHOREHAM SOCIETY 2020 SURVEY next two pages >

These uncertain times have caused many of us to re-think what matters to us. Where we live, the lovely Shoreham-by-Sea, is an important part of that. To allow the Shoreham Society to grow with and adapt to changing needs we are asking you to let us know what matters to you about our town, so please help us by taking a few moments to fill in our short survey. The survey is anonymous, but if you want to be contacted please provide your details at the end of the survey.

Many thanks for your help in this, your feedback is really important.

Please return completed Surveys to **Shoreham Society, c/o 67 West Street, Shoreham-by-Sea BN43 5WF.**