

Project report for Capturing Old Shoreham: The Village Map project

Project leader : Karolyn Mnich

Overview of the Project



The village map is a community map of Old Shoreham with contributions from people of all ages who live, work and go to school here. The concept was originally inspired by the different parish maps produced for the West Sussex millennium maps project and developed from our Old Shoreham heritage trail map produced in 2025 (50th anniversary year of Old Shoreham conservation area). This map isn't just about the amazing historical buildings we have in our area but also the flora and fauna you can find from the river to the downs. It also includes different recreational activities that people enjoy.

There are also some hidden surprises for people to discover when they look closely.

Stages of the project...

Initial Promotion of project to involve the community

To get people engaged and aware of all five of the Capturing Old Shoreham projects including the village map project, FoldS had a large stand on the local farmers market which generated a lot of interest in the work that FoldS was doing. I wrote an article for "inside shoreham" magazine, local newsletters plus we had various social media posts. The village map project was included on the community banner stand at the midsummer community fair in old shoreham in June. Elements of the community banner and the village map overlap and some people have contributed to both projects.

Start of the project - presentations, workshops & meetings

The first workshop presentation took place in National heritage week in September at St Nicolas church. This was an opportunity to present the background and ideas for creating a community map of our area inspired by the different parish maps produced for the West Sussex millennium project.

We discussed how people might get involved either as researchers, artists, photographers, writers, etc and what people would like to contribute and also what they would like to see



on a map of our area. As this was a community map I wanted to know some of the quirker aspects of Old Shoreham that people would like to see included in the map, different places, people, historical and contemporary features that we could include. Feedback also arrived via an online questionnaire, a paper version and also in talking to various artists and people who live locally (see feedback sheet). From the responses a list of contents for the map was created.

Artists who exhibited in the “new art for old shoreham” exhibition were also contacted directly and several were keen to have their artwork in the community map .

Involving local Primary schools

As we wanted all ages of our communities to be involved in the map I contacted three local primary schools and gave the heritage week slide presentation to the lead teachers at each school. We discussed various ideas linked to the schools which formed the basis for a different project brief I wrote for each of them (see attached). From mini-beasts on a school allotment, to the shapes and textures of buildings and houses on a school walk, to the different activities in Buckingham park from picnics, playing games, different family activities and wildlife spotting.

For the project to fit in best with the schools’ curriculum the youngest school children in years 1 & 2 (mostly 5-7 year olds) took part. All the schools started creating artwork for the project after the October half term and completed work at the end of term. Colourful marker pens, water based paints and coloured pencils were used by the children who

showed many different and often amusing aspects of life in old shoreham from their perspective.

All the children’s artwork was delightful so we took some time to make a shortlist from the 200 pieces of artwork received. We had already said that all the artwork submitted would appear in a schools book for the Marlipins exhibition but when selecting work to go into the map the criteria was :

- Good use of colour and strong line that can be reproduced well for the map
- A great image showing something unique or



special to our area, or made us smile

- Where we had several pieces of artwork showing a similar subject (eg a ladybird, a picnic, riding a bicycle, house, etc) we chose images that stood out and were clearest to see.

Workshop drop-in sessions for adults

Following the initial heritage week presentation there were four drop-in sessions held each month from October to January for artists and photographers to discuss their ideas and development of work, plus there were additional 1:1 meetings with artists.

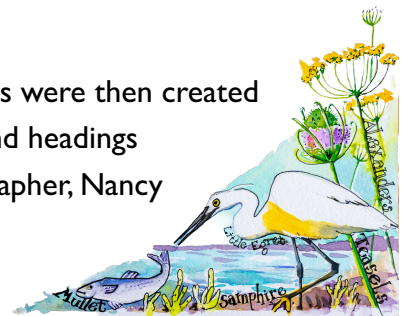
The work produced for the map has been executed in a variety of media; Photography (wildlife, birds, butterflies), Painting in different media (landscape and wildlife), Embroidered textiles (buildings and wildlife), coloured ink drawings (local people), plus Digital illustrations (travellers, some flora, fauna and details around St Nicolas church)

The Map Development

Early on two initial concept drawings for the community map were created based on community feedback (see attached). The map showing the area of Old Shoreham was to be central with artwork placed in and around the map area.

Decorative floral corners were then created by artist Seana Mallen and headings produced by local calligrapher, Nancy Ouchida-Howells.

Other artists and photographers chose a range of things they wanted to contribute to the map reflecting their personal interests and styles.



I drew the main map of Old Shoreham in ink with coloured pencils and watercolour, with reference to the simplified parish map, open street map, aerial photos and walks around the area. The lower third shows the housing area and roads plus the three primary schools that took part. Almost 2/3 of the map area is downland above Old Shoreham. Old Erringham, once a separate medieval village, is now part of Old Shoreham plus we





have Mill Hill nature reserve, Thundersbarrow Hill and Slonk Hill all with historic significance. The river Adur runs from bottom to top and the flyover and bypass cut across horizontally.

Both the adults and children's artwork, plus photographs submitted have been fitted into different sections of the map and surrounding area like a jigsaw puzzle. This has taken hours of work to get the balance right and include as much variety as possible. New coloured backgrounds have been created and added around the central map of Old Shoreham. All Artwork included was either scanned or photographed from the original pieces or submitted by artists digitally.



Hundreds of hours went into the making of this community map and we hope people will look closely, discover what is so special about Old Shoreham and go and explore.

And finally ...

A massive thanks needs to go to everyone who gave their time and skills to make this Village Map a unique piece of community artwork of Old Shoreham.

The village map will be on display as part of the “**Capturing Old Shoreham**” **exhibition at Marlipins Museum** from May - July.

We hope to create an interpretation board to be sited in Old Shoreham and copies will go to each of the three schools.

The Village Map contributing artists, photographers and groups are:

Claire Ablett - stitched artwork of the Amsterdam Inn and Slonk hill camp
Susan Bishop - fox and squirrel paintings
Caron Brown - stitched artwork of heron and memorial arch
Jerry Campbell - various birds and seal photographs
Angela Clark - stitched artwork of Apron community garden
Dennis Hunt - Buckingham house, red lion and barn owl photographs
Ronny Flynn- stitched artwork of Hunters moon
Julia Lillywhite - cottage and gulls embroidery
Seana Mallen - four floral illustrations for map corners
Karolyn Mnich - main map drawing, Erringham farm and coloured line illustrations
Nancy Ouchida-Howells - calligraphy for map headings and compass
Bo Phoenix - butterfly illustrations
Lynn Reeves - stitched artwork of Adur lodge and church lych-gate
Janice Thurston - Adur river view painting
Rosie Shepherd - stitched flowers and caravan
Elijah Vardo - illustrations of GRT community

The S.O.L.D Artists with artwork inspired in and around St Nicolas church are:

Lucy Buckman, Connor Fallon, Jolie Marshall, Rachel Parkes, Darren Thompson

The three Schools who created artwork are:

Buckingham Park Primary School

(School coordinator, Paul Everitt, Year 1 & Early Years Lead)

Children's coloured marker artwork of allotment and mini-beasts, Buckingham park activities, playing, sports, picnics, nature spotting.

St Nicolas & St Mary CE Primary school

(School coordinator, Helen Woodman, assistant head teacher and year 6 lead)

Children's paintings and drawings around Buckingham park and old shoreham

Swiss Gardens Primary school

(School coordinator, Anne Backshall, assistant head teacher)

Children's Paintings of different buildings found in Old Shoreham

The Village Map artwork photographed and assembled by

Dennis Hunt, Hannah Inskip and Karolyn Mnich

